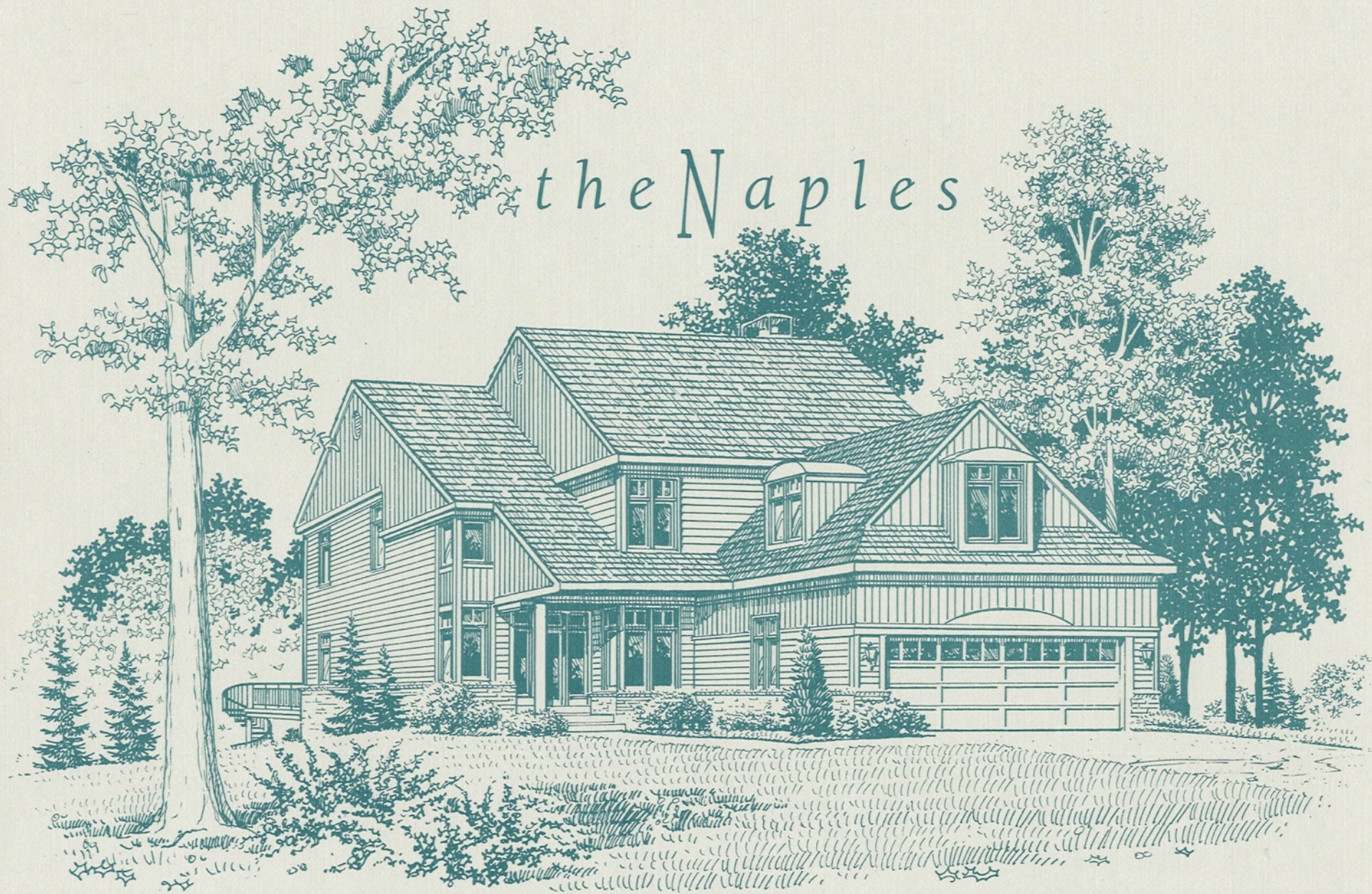


*the Naples*

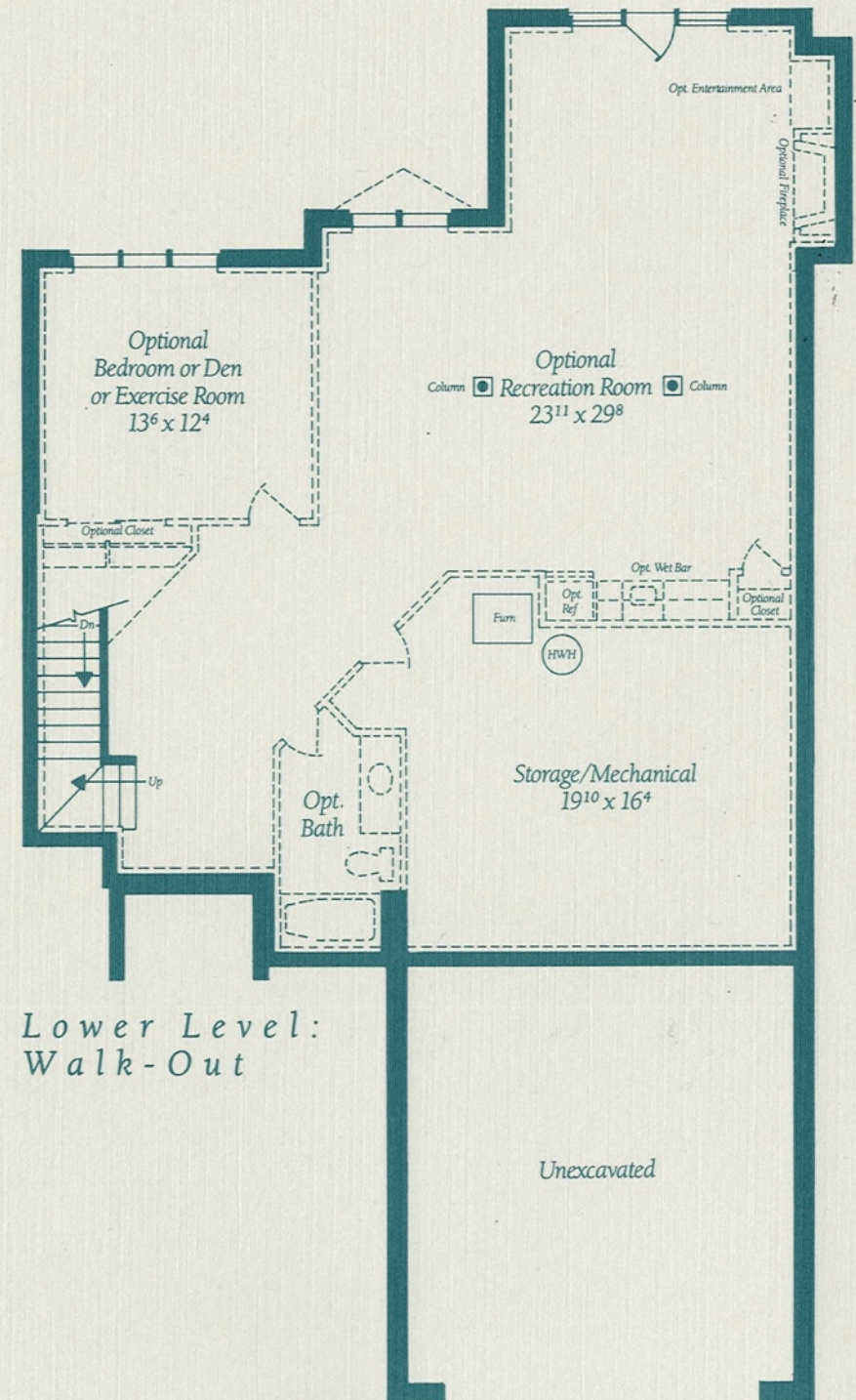




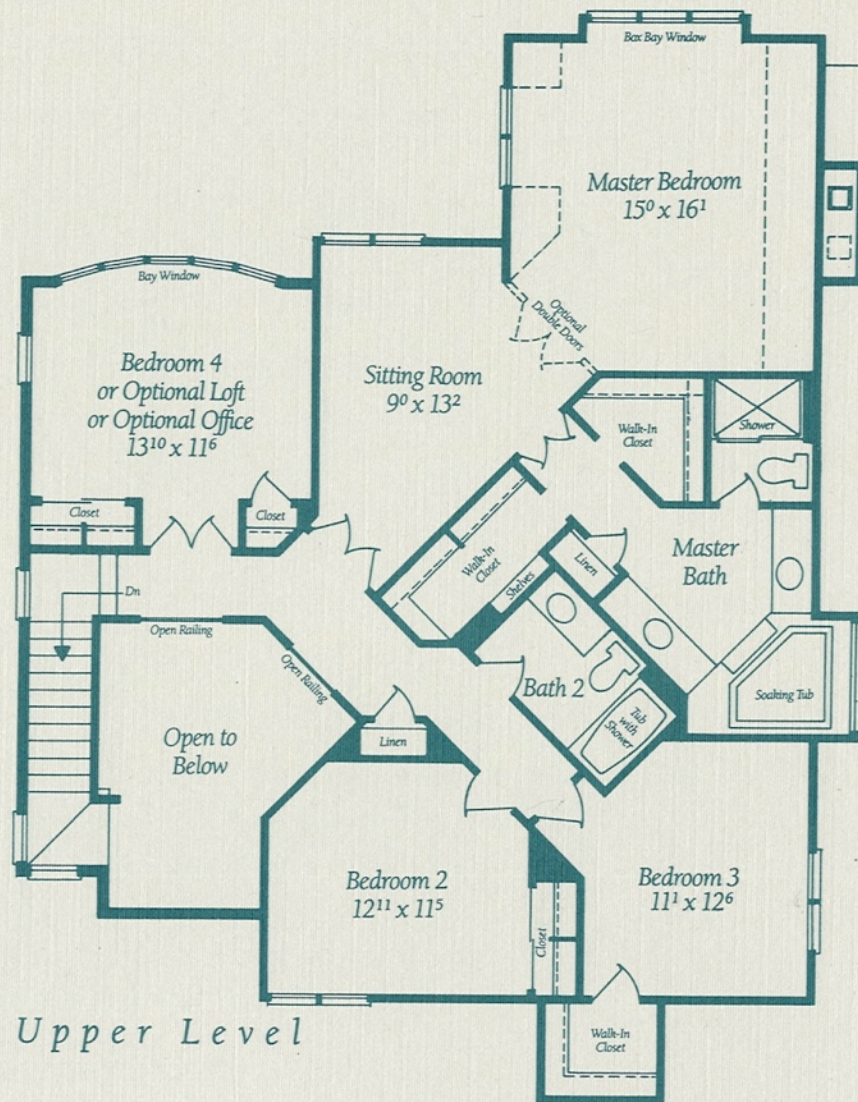
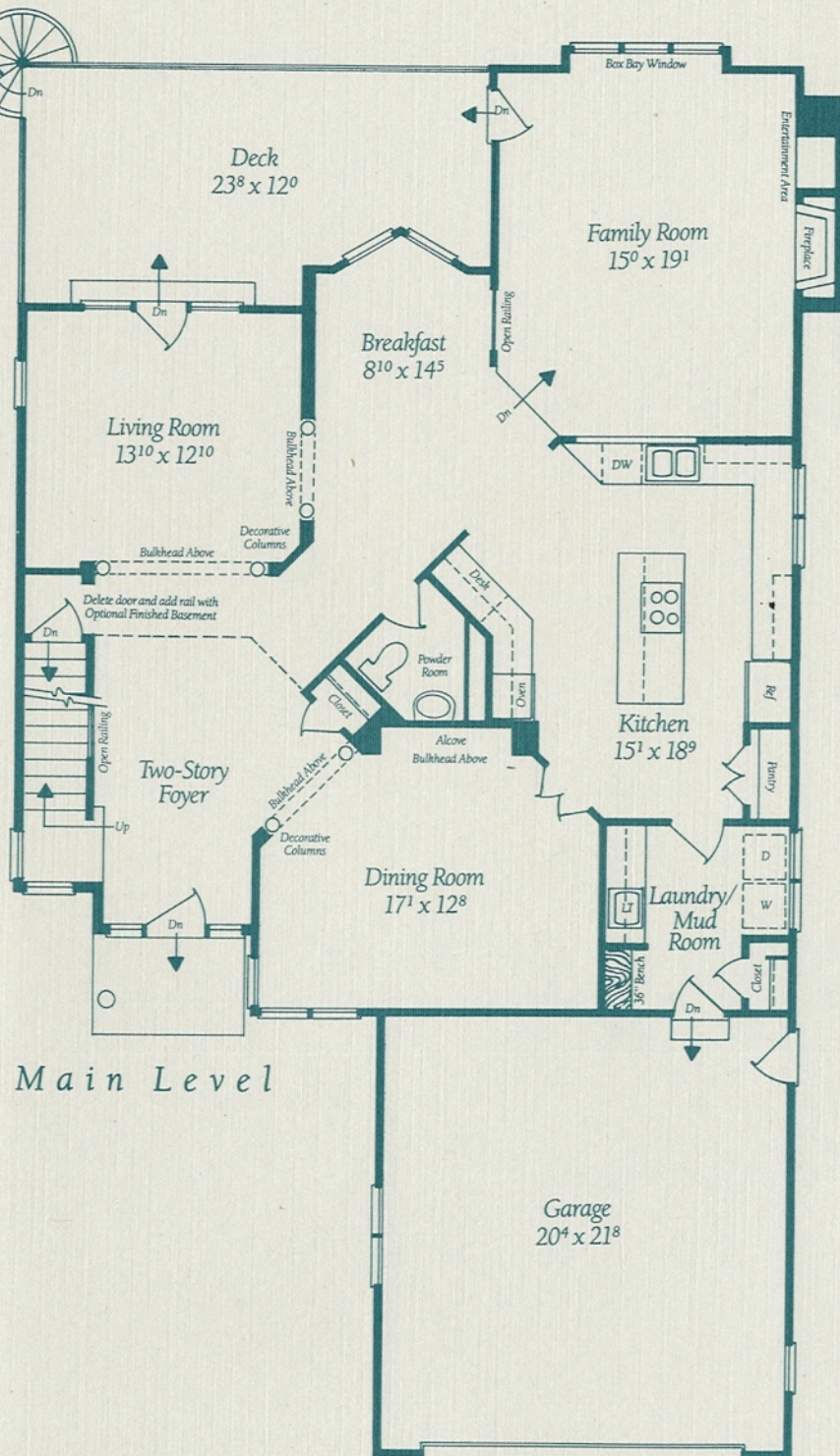
# the Naples

## Architectural Design Features

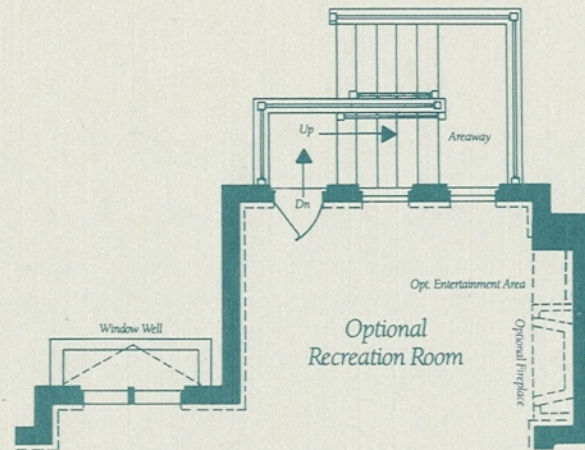
- Dramatic two-story Foyer with coat closet and Powder Room
- Formal Living Room and Dining Room defined by decorative columns
- Spacious Family Room with gas fireplace and three-window box bay
- Gourmet-inspired Kitchen with granite or Corian cooking island, wall oven, desk, pantry, pass thru to Family Room and adjoining Breakfast Room with V-shaped bay window
- Laundry/Mud Room off Two-Car Garage with built-in bench, coat closet and laundry sink
- Large wood deck off Living Room and Kitchen with spiral staircase to ground level with walk-out Basement; custom patios on Lots 1-15
- Master Suite with box bay window, adjoining Sitting Room and extra-spacious Master Bath with dressing area with his and her walk-in closets, two vanities, 60" x 60" soaking tub and private water closet and shower
- Three or optional four secondary Bedrooms (or three Bedrooms and Loft), each with ample closet space sharing a full Bath; optional third Bath available
- Full Lower Level with either walk-out or areaway walk-up that, when finished at your option, may include: a Recreation Room; fireplace; Den with closet; full Bath; wet bar and Storage/Mechanical Room



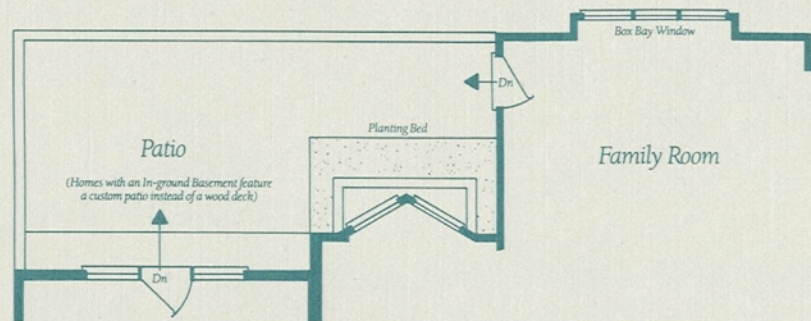




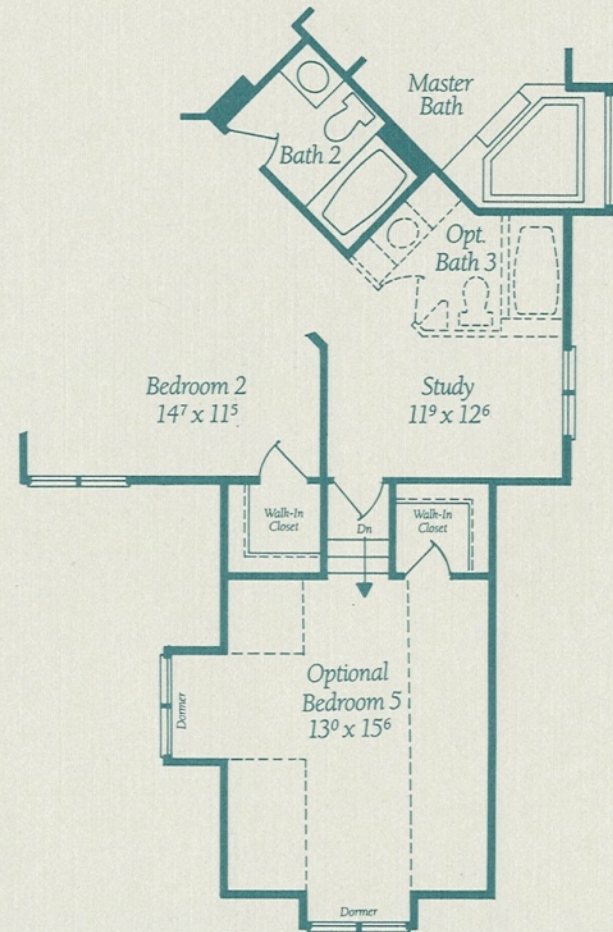




*Partial Lower Level:  
In-Ground with Areaway*



*Partial Main Level:  
Patio Plan*



*Partial Upper Level:  
Optional Room Over Garage*

# Gulick Group

Illustrations and specifications for Gulick Group's Naples model at Newport Shores are based on authorized information. All room dimensions are approximate, and all descriptions are believed correct at time of publication.; however, Gulick Group reserves the right to make changes from time to time without notice or obligation in price, specifications and to change or discontinue models. Copyright © 1994 by Gulick Group, Inc. . . . . 5/94.