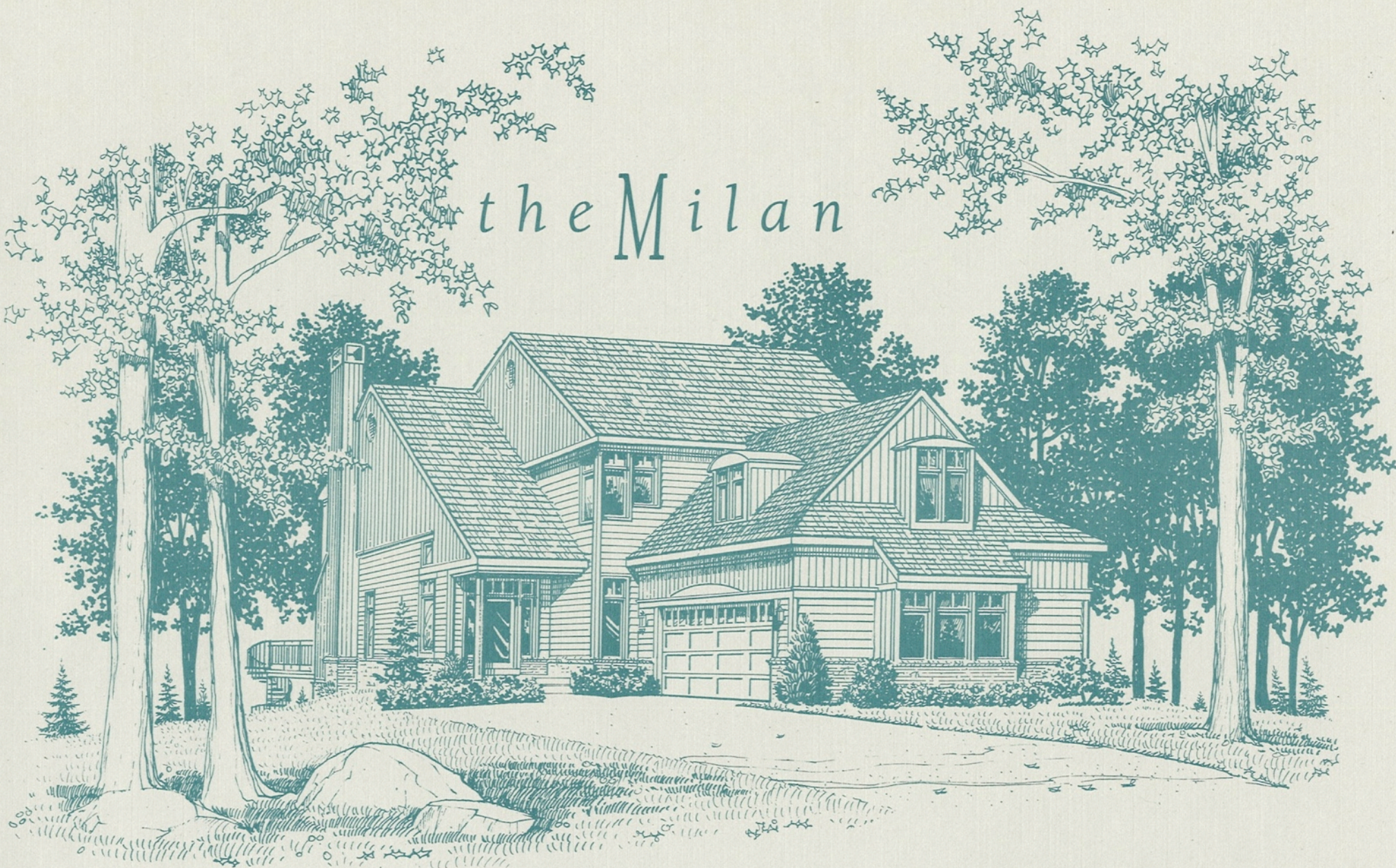


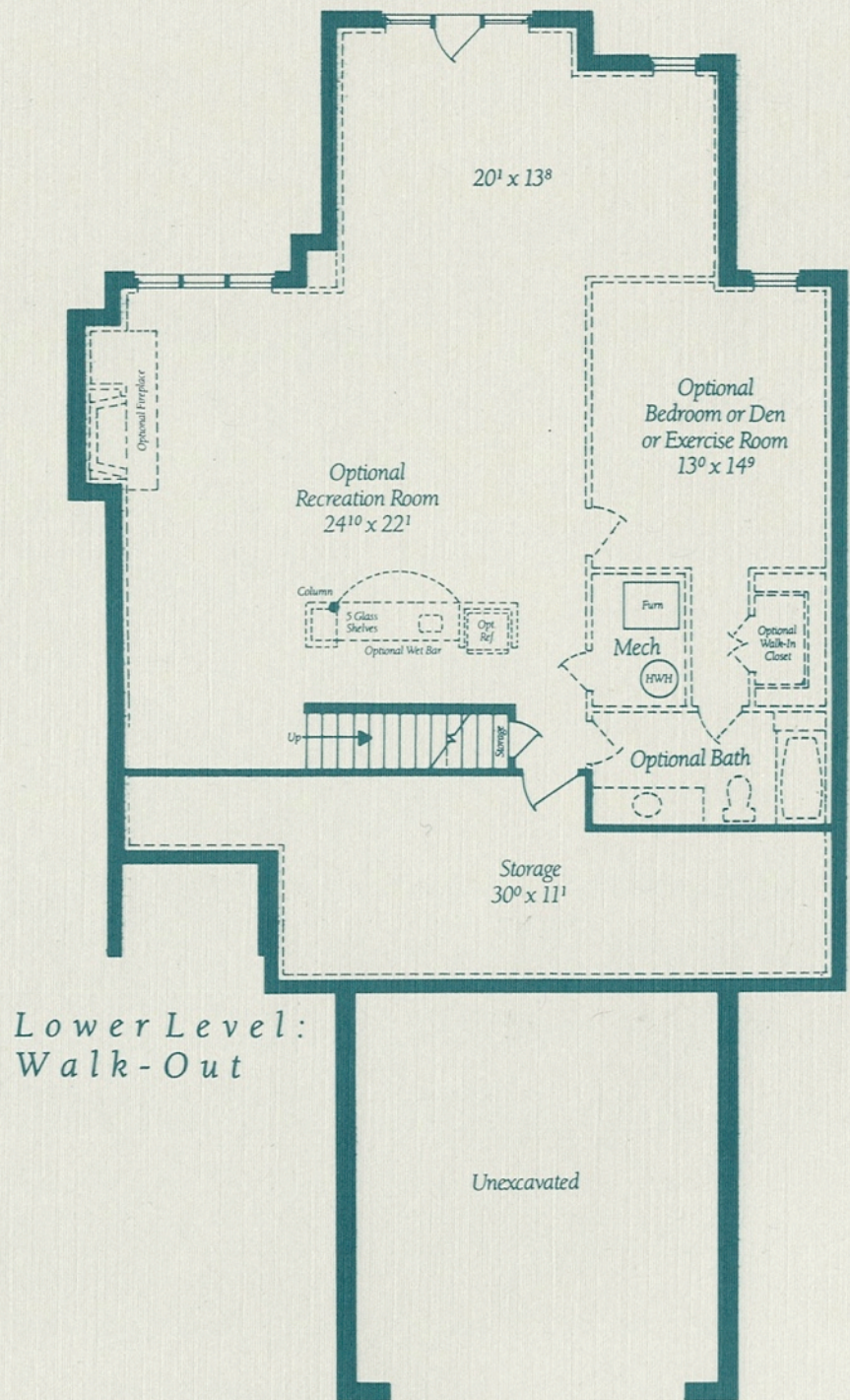
the Milan

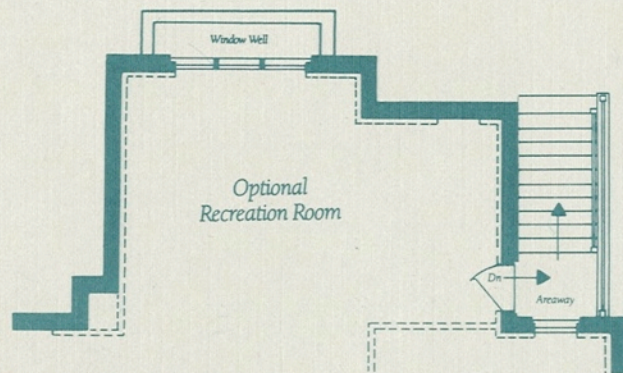


the Milan

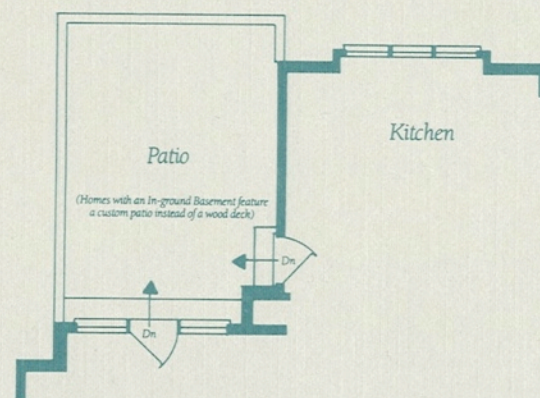
Architectural Design Features

- Dramatic two-story Foyer with walk-in coat closet
- Formal Living Room defined by decorative columns with gas fireplace and built-in art niche and shelving surround
- Formal Dining Room defined by decorative columns
- Main Level spacious Guest Bedroom or Office with closet and full Bath
- Gourmet-inspired Kitchen with dramatic box bay window, granite or Corian cooking island, wall oven, desk and adjoining Breakfast Room
- Laundry/Mud Room off Two-Car Garage with laundry sink, built-in bench and coat closet
- Large wood deck off Living Room and Kitchen with spiral staircase to ground level with walk-out Basement; custom patios on Lots 1-15
- Master Suite with his and her walk-in closets and sumptuous Master Bath with two vanities, 60" x 60" soaking tub, separate shower and private water closet
- Two secondary Bedrooms with an optional Office or third Bedroom, each with ample closet space, sharing a full Bath
- Exercise or Reading Loft off the Master Suite overlooking the Foyer below
- Full Lower Level with either walk-out or areaway walk-up that, when finished at your option, may include: a Recreation Room; fireplace; wet bar; Den with walk-in closet and full Bath; and Storage Room

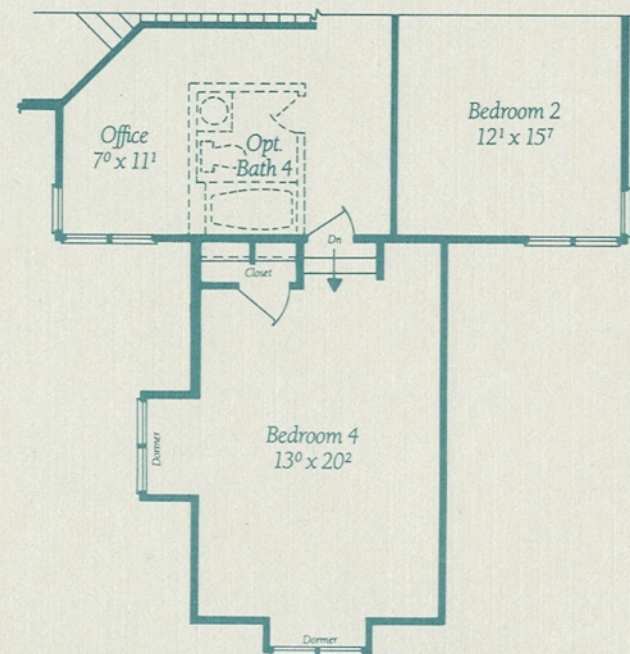




*Partial Lower Level:
In-Ground with Areaway*



*Partial Main Level:
Patio Plan*



*Partial Upper Level:
Optional Bedroom over Garage*

Gulick Group

Illustrations and specifications for Gulick Group's Milan model at Newport Shores are based on authorized information. All room dimensions are approximate, and all descriptions are believed correct at time of publication.; however, Gulick Group reserves the right to make changes from time to time without notice or obligation in price, specifications and to change or discontinue models. Copyright © 1994 by Gulick Group, Inc. 5/94.