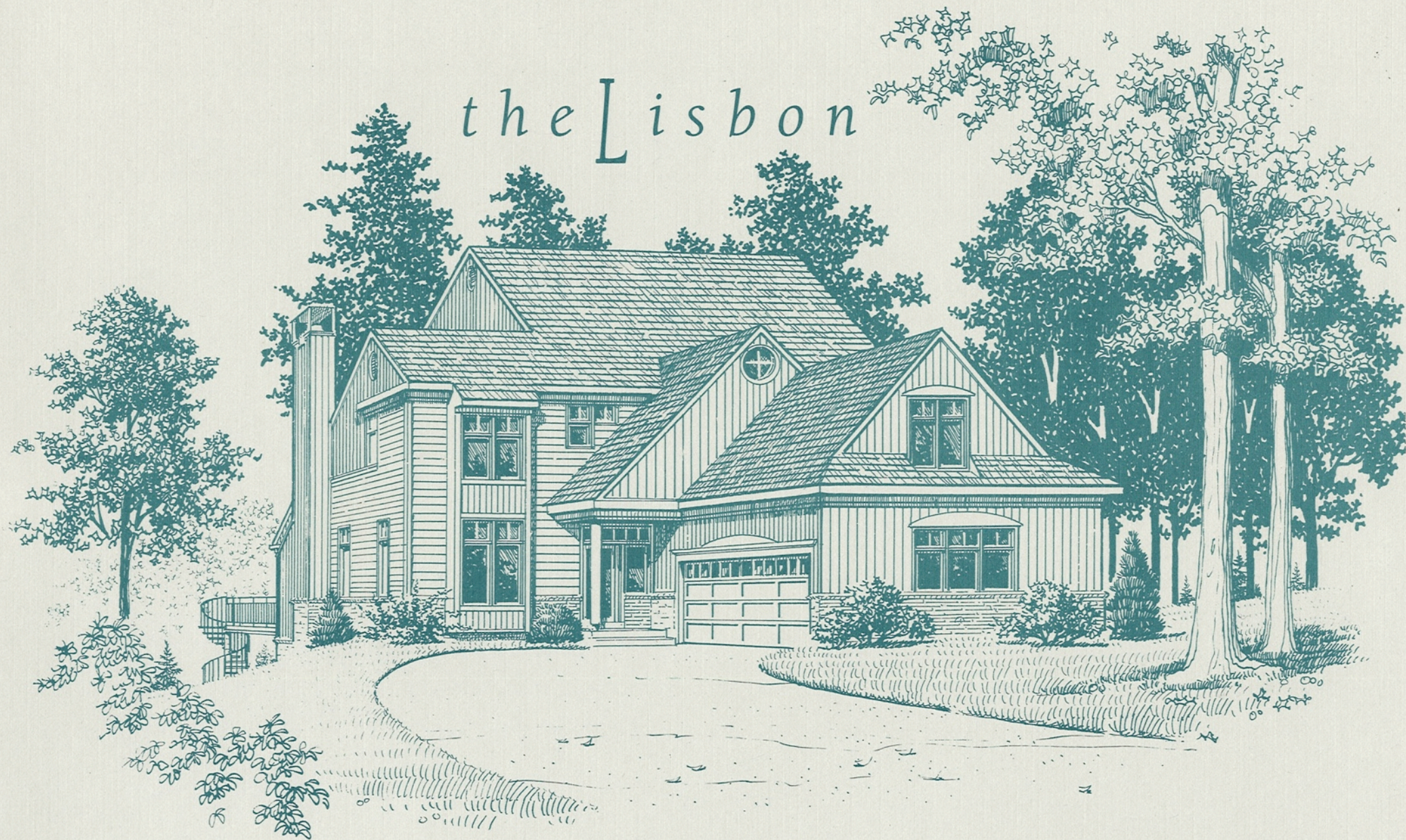


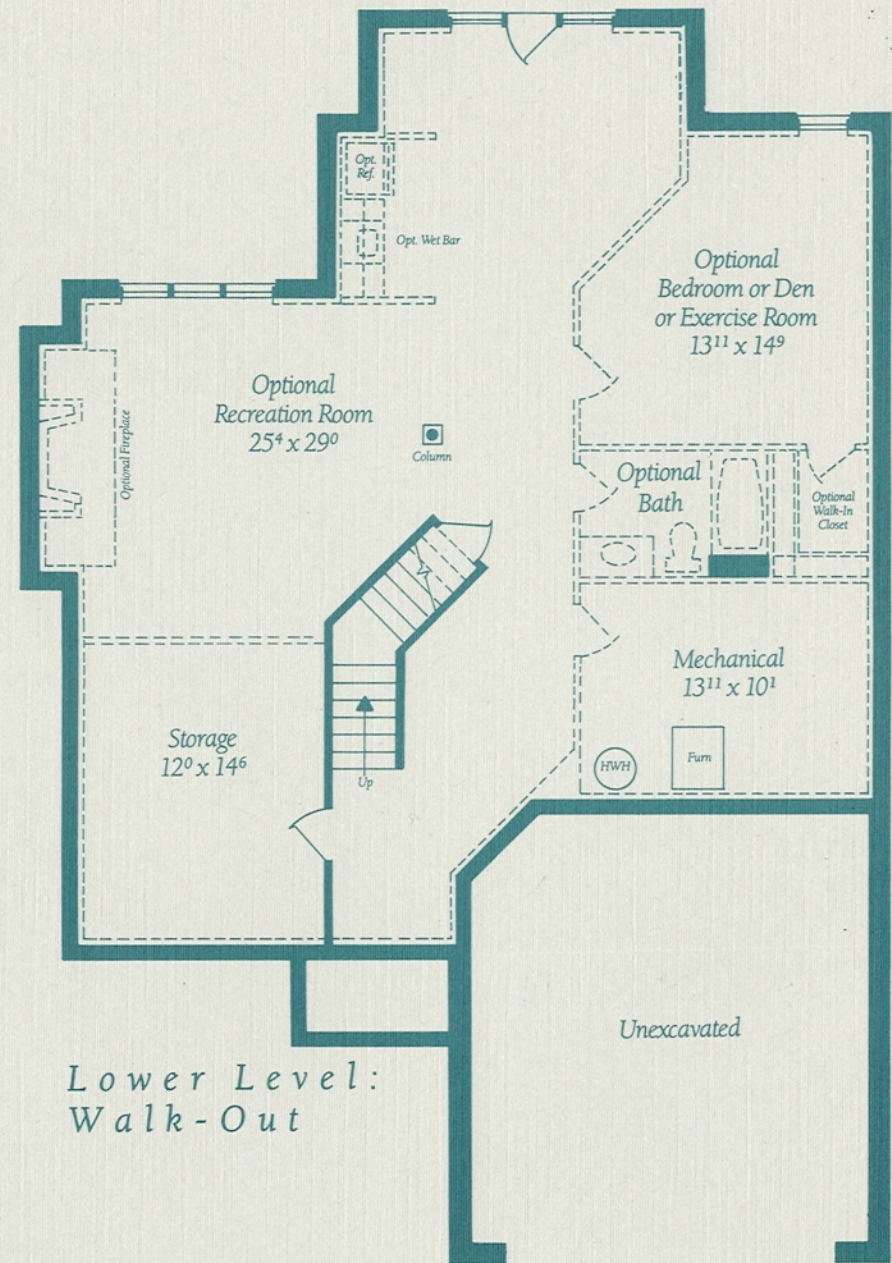
the Lisbon

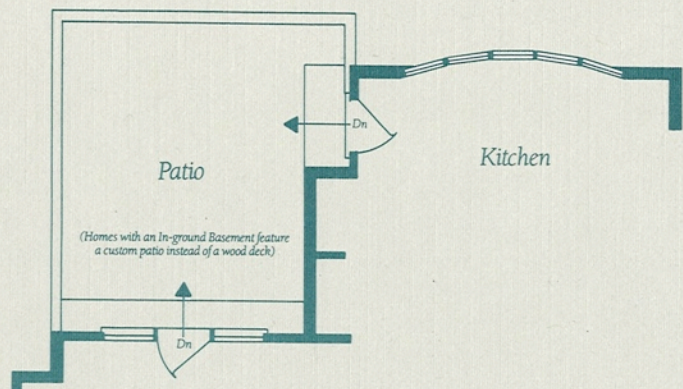


the Lisbon

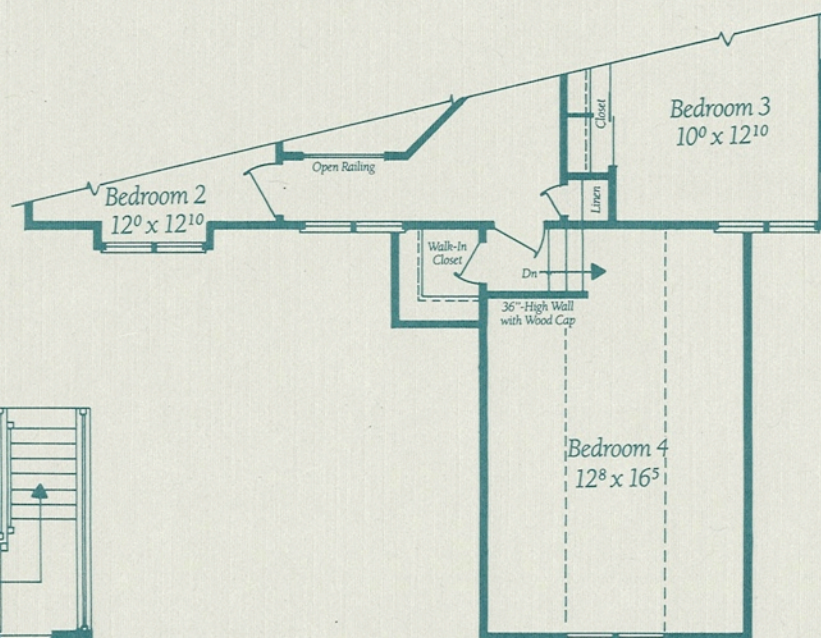
Architectural Design Features

- Dramatic two-story Foyer with coat closet and Powder Room
- Formal Living Room
- Formal Dining Room defined by decorative columns
- Spacious Family Room with gas fireplace with custom built-in shelving
- Gourmet-inspired Kitchen with granite or Corian cooking island, corner wall oven, pantry, broom closet, desk and adjoining Breakfast Room with sweeping bay window
- Main Level Mud Room off Two-Car Garage
- Large wood deck off Living Room and Kitchen with spiral staircase to ground level with walk-out Basement on Lots 16-32; custom patios on Lots 1-15
- Master Suite with his and her closets and Master Bath with two vanities, 60" x 60" soaking tub and separate shower
- Two secondary Bedrooms with an optional Office or third Bedroom, each with ample closet space, sharing a full Bath
- Upper Level Laundry Room with laundry sink
- Full Lower Level with either walk-out or areaway walk-up that, when finished at your option, may include: a Recreation Room; fireplace; Den with walk-in closet and full Bath; wet bar; Storage Room and Mechanical Room

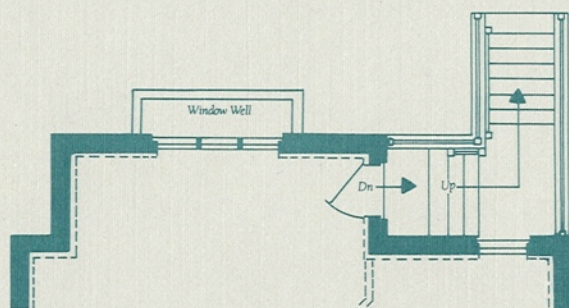




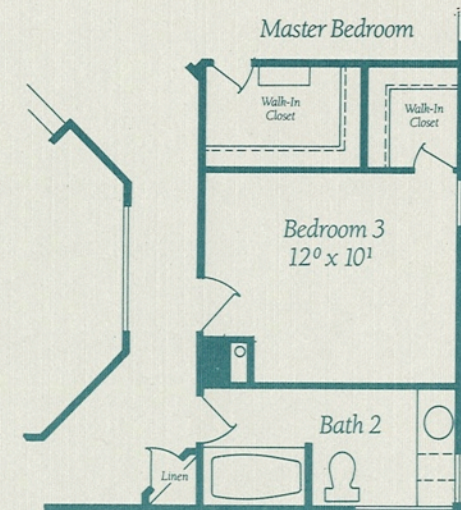
*Partial Main Level:
Patio Plan*



*Partial Upper Level:
Optional Room Over
Side-Entry Garage*



*Partial Lower Level:
In-Ground with Areaway*



*Partial Upper Level:
Alternate Plan*

Gulick Group